

# Visualize the RNA World

Learn how at a seminar near you!

**Date**  
September 11-14, 2017

**Locations**  
Boston - Philadelphia - Ann Arbor

During these events, scientists will present and discuss how RNAscope® and BaseScope™ assays have been used to detect, visualize and quantify RNA expression- including mRNA, lncRNA, splice variants and highly homologous RNA sequences - within the tissue context. These seminars will presents a unique opportunity to share experiences, discuss case studies and practical information on how to overcome scientific challenges.



**Combined IHC and RNA ISH  
to elucidate tumor molecular  
heterogeneity**

**Nallasivam Palanisamy, Ph.D**  
Associate Scientist/Professor at  
Henry Ford Health System, Associate  
Professor (Adjunct) at University of  
Michigan



**Current state-of-the-art  
tissue-based RNA analysis with  
RNAscope® Technology**

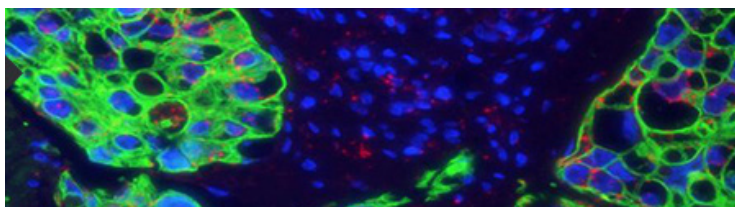
**Courtney Anderson, Ph.D**  
Group Leader Applications,  
Advanced Cell Diagnostics Inc.

Date	Day	Time	Location
Sep 11	Mon	12:30 pm*	Room 3120, Simches Research Bldg, Massachusetts General Hospital
Sep 12	Tue	10:00 am	Center for Life Sciences Bldg, 17th Floor, Brigham and Women's Hospital
Sep 12	Tue	1:00 pm	Room Cannon, Building C, 1st floor, Harvard Medical School
Sep 13	Wed	10:00 am	Translational Research Lab Building, UPENN (closed session)*
Sep 13	Wed	2:00 pm	Room 123-C, Abramson Pediatric Research Center, Children's Hospital of Philadelphia
Sep 14	Thu	12:00 pm*	Room MSII (3813-17), University of Michigan, Ann Arbor

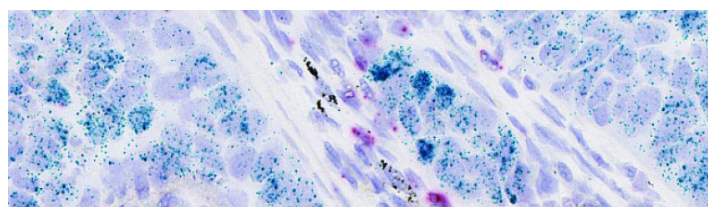
\* Lunch will be provided



**Register today at:**  
<http://rna.acdbio.com/seminars>



Human lung cancer FFPE Dual ISH-IHC with CAM5.2 protein (Green) and PPI mRNA (red)



PD1 (red) and PDL1 (green) expression in human NSCLC tissue